

OUTCOMES
BEYOND
PERFORMANCE }

HERMES IMPACT OPPORTUNITIES FUND

Quarterly Impact Report

Hermes Investment Management
Q3 2019

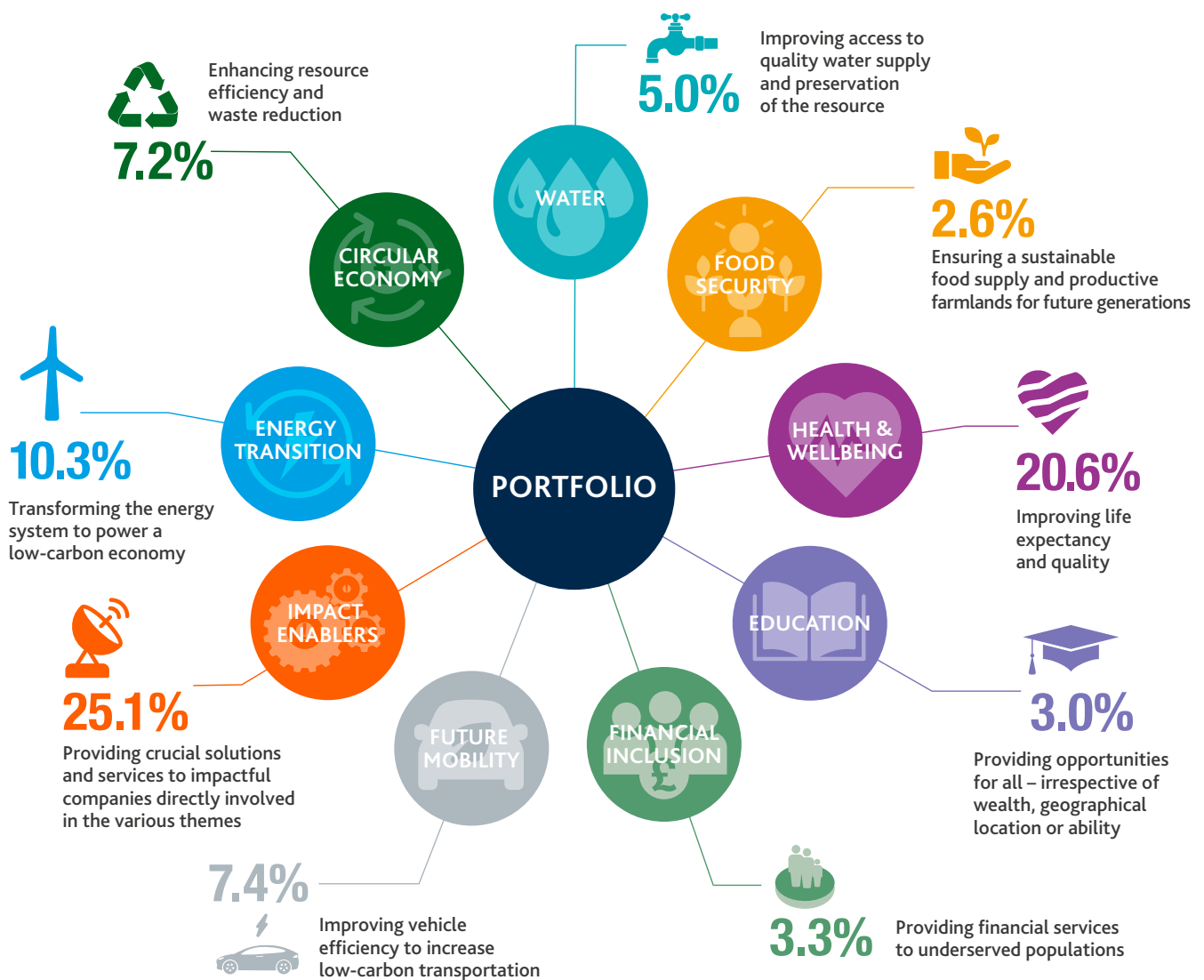
For professional investors only

www.hermes-investment.com


HERMES
INVESTMENT MANAGEMENT

The Hermes Impact Opportunities Fund is a high-conviction global equity strategy with a bold objective. It aims to generate long-term outperformance by investing in companies succeeding in their core purpose: to generate value by creating positive and sustainable change that addresses the underserved needs of society and the environment. In this way, it focuses on tomorrow's leading companies, today.

EXPOSURE BY IMPACT THEME¹



Source: Hermes as at 30 September 2019.

This document does not constitute a solicitation or offer to any person to buy or sell any related securities or financial instruments. The value of investments and income from them may go down as well as up, and you may not get back the original amount invested. Past performance is not a reliable indicator of future results and targets are not guaranteed.

¹Note: we revised our thematic exposure methodology earlier this year to provide a more granular attribution of thematic exposure for each portfolio holding. As at 30 September 2019, 15.4% of our exposure was not directly related to any of our nine impact themes.

THE HERMES IMPACT MEASUREMENT PHILOSOPHY

A meaningful approach that guides internal investment decision-making

Research intensive

- We use independent research – provided by intergovernmental organisations, non-governmental organisations (NGOs) and academics – to understand the link between company-produced outcomes and the broader impact.
- We construct a Pathway of Change model for each portfolio company to track the sequence from inputs to impact.



Measurement is one of the key pillars of impact investing – alongside intentionality and additionality – that distinguishes it from other traditional forms of investing. However, in a rapidly growing market, impact measurement is not a straightforward science.

Impact goes beyond ESG

- Despite being an important part of our investment process, ESG data is focused on how sustainably a company is run, particularly its operations.
- In contrast, impact data focuses on the impact of its products and services.



Qualitative and quantitative inputs

- We use quantitative metrics alongside qualitative inputs to form an opinion about a company's impact performance.
- Few impact data points are audited or adhere to a common reporting standard. Therefore, we reach out to our portfolio companies to understand the methodologies they use when publishing impact data.



Engagement tops estimation

- In the absence of company-provided and third-party data, we do not estimate impact.
- We pursue regular, constructive engagements with companies: it encourages companies to understand, measure and, ultimately, be accountable for their impact.



Collaboration

- Impact measurement needs to become a precompetitive issue – and so, collaboration is key.
- Contributing to measurement and reporting initiatives is crucial as they have the capacity to develop a shared performance for impact measurement, such as the Impact Management Project (IMP).

For insights into the rationale of our impact measurement philosophy, use the following link:
<https://www.hermes-investment.com/ukw/wp-content/uploads/2019/07/hermes-impact-opportunities-impact-measurement-commentary-q3-2019.pdf>

CASE STUDY

EMERGENT BIOSOLUTIONS



SDG target 3.3: By 2030, end the epidemics of AIDS, tuberculosis, malaria and neglected tropical diseases and combat hepatitis, water-borne diseases and other communicable diseases.

SDG target 3.5: Strengthen the prevention and treatment of substance abuse, including narcotic drug abuse and harmful use of alcohol.

SDG target 3.9: By 2030, substantially reduce the number of deaths and illnesses from hazardous chemicals and air, water and soil pollution and contamination.

Theory of change

Emergent BioSolutions has a portfolio of current and development stage medical countermeasures for a broad range of potential epidemics, including Zika, Chikungunya, Influenza A and Ebola viruses. The company's prophylactic and anaphylactic treatments can be used in strategic national stockpiles, increasing country resilience during outbreaks. Studies point to countries' lack of readiness for public health threats linked to chemical and biological hazards and emerging infectious diseases.

Epidemics: a severe threat to global health

Globalisation has made the world more vulnerable to societal and economic impacts from outbreaks of epidemic-prone diseases. Travel and trade, rapid urbanisation, human displacement, limited access to healthcare, climate change as well as other trends create the conditions for fast-spreading, catastrophic outbreaks.

According to the World Health Organisation (WHO), pandemic preparedness globally is estimated to cost \$4.5bn a year – that's less than 1% of the estimated cost needed to respond to a medium-to-severe pandemic.

Preparedness for future pandemics

Current holding Emergent BioSolutions focuses on public health threats. By investing in R&D and buying smaller biotech companies, it has developed an extensive product portfolio and pipeline for potential epidemics, including Ebola, Zika and smallpox. The company's treatments can be used in strategic national stockpiles to respond to future pandemics. In doing so, the company contributes to improving the preparedness and response to pandemics, thereby increasing the world's resilience during outbreaks of infectious diseases.

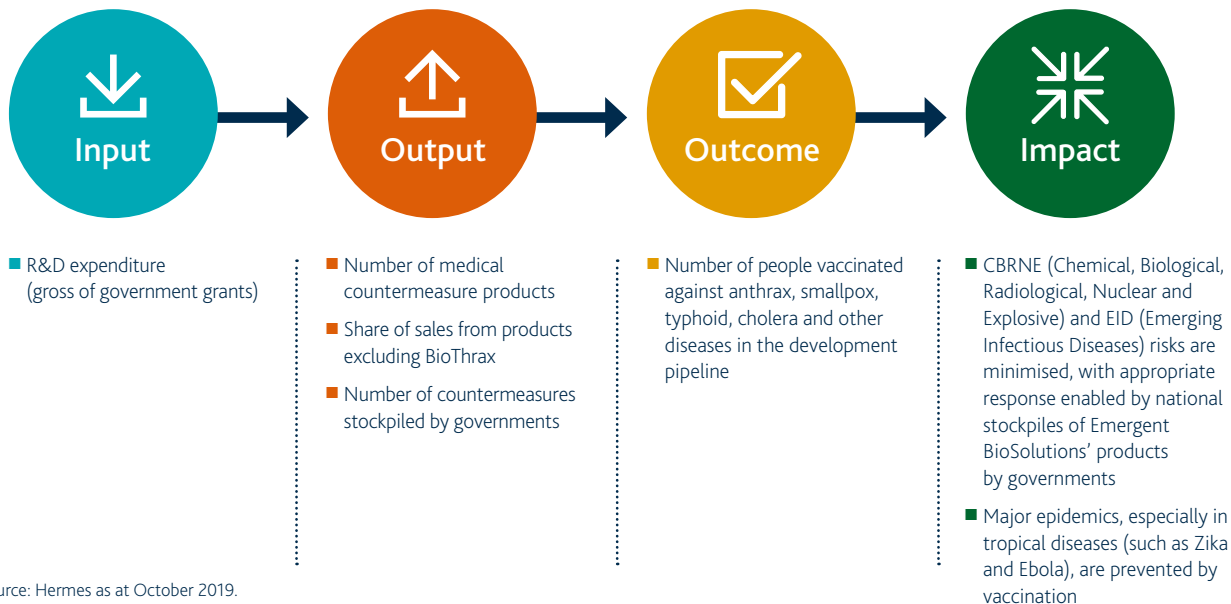
70,000 people die every year from drug overdoses in the US

For example, drug abuse is addressed by SDG target 3.5. In the US, drug overdoses are responsible for 70,000 deaths a year. Emergent BioSolutions' product Narcan – a nasal Naloxone spray and the only Food and Drug Administration (FDA) approved needle-free emergency opioid overdose treatment – has an efficacy rate of 94%.

Measuring impact

As already documented in our impact measurement philosophy, we use a Pathway of Change model – and in doing so, we were able to establish the link between the Theory of Change and the impact metrics used (see Figure 1). However, impact measurement for a company like Emergent BioSolutions is intrinsically difficult. After all, in an ideal world its products shouldn't be used if major public health threats do not materialise. That said, should an epidemic occur, the company's products will enable governments to respond appropriately.

Figure 1. Emergent BioSolutions' Pathway of Change



Source: Hermes as at October 2019.

CASE STUDY
CSL



SDG target 3.2: By 2030, reduce by one third premature mortality from non-communicable diseases through prevention and treatment and promote mental health and well-being.

SDG target 3.8: Achieve universal health coverage, including financial risk protection, access to quality essential health-care services and access to safe, effective, quality and affordable essential medicines and vaccines for all.

Theory of change

CSL is the largest global provider of plasma therapies which treat a host of diseases, ranging from serious immunodeficiency diseases to coagulation disorders. Human immunoglobulins – one of CSL’s growth drivers – feature on the WHO’s list of essential medicines. CSL has an ambitious plan to dramatically increase its plasma collection capacity, which should in turn allow it to produce more plasma-derived therapies. The remainder of its global business sells vaccines, with influenza topping the list of burden of disease and disability-adjusted life years.

Plasma therapies: addressing an unmet need

Plasma² therapies are life-saving: from haemophilia to immunodeficiency, they treat a range of diseases. However, plasma-related diseases remain vastly undertreated. Research by CLSA estimates that the market for immunoglobulin (IG) treatment would be 342m grams every year, if those who required the treatment in the US and European Union received it. That compares to an estimated global IG usage of 165m grams in 2017. As such, plasma therapies address one of society’s unmet needs. And that’s where current holding CSL plays an important role.

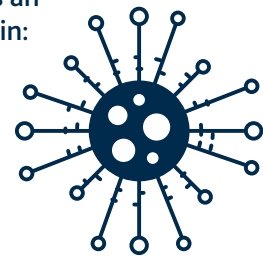
As the largest global provider of plasma therapies, CSL operates 176 plasma collection centres across the globe through its CSL Behring division (which accounted for 85% of revenue in FY18/19³). The company has ambitious plans to expand its presence by opening 25-30 more centres this year, thereby increasing the supply of plasma worldwide. One of the group’s key growth drives is human immunoglobulins – which features on the WHO’s list of most efficacious, safe and cost-effective medicines for primary conditions. It also has a particular focus on growing its specialty products that focus on rare diseases such as Hereditary Angioedema.

In addition, CSL’s Seqirus division specialises in cell-based influenza vaccines. Indeed, influenza remains the most burdensome infectious disease, both in terms of incidence and mortality rate. Evidence shows that CSL’s cell-based jab was 26% more effective than standard egg-based vaccines in preventing flu-like illness in the US in 2017/18⁴.

The burden of influenza

Seasonal influenza remains an annual epidemic, resulting in:

3-5M
 of severe illness



290,000-650,000
 deaths

Influenza is the most likely disease to develop into a pandemic. A global pandemic could cost:

\$3TN+
 nearly 5% of global GDP

Source: WHO, World Bank.

Figure 2. Plasma proteins treat a vast range of diseases

- **Albumin (25 grams*)**
 Shock, Burns, Adult Respiratory Distress Syndrome, Cardiopulmonary Bypass Surgery
- **IVIG (Intravenous Immunoglobulin) (4 grams*)**
 Primary Immunodeficiency Diseases, Autoimmune Diseases, Chronic Inflammatory Demyelinating Polyneuropathy, Idiopathic Thrombocytopenic Purpura
- **Alpha-1 Antitrypsin (0.15 to 0.30 grams*)**
 Alpha-1 Antitrypsin Deficiency (Genetic COPD)
- **Coagulation Factors (Factor VIII: 300 to 450 IUs, Factor IX: 180 to 200 IUs*)**
 Haemophilia A&B, von Willebrand Disease, Bleeding Disorders

*Plasma protein yields per litre of plasma
 Source: Politico.

Tracking impact progress

As already mentioned, the diseases that plasma therapies treat are vast, stretching across many medical sub-specialities, such as neurology and immunology. And so, CSL has limited visibility about the use of its products once they are sold. This makes it difficult to measure the impact of plasma therapies. Nevertheless, one of the impact metrics we use is the number of plasma collection centres. This acts as a proxy for plasma supply growth – to us, it is arguably the best proxy to use owing to its widespread disclosure (across industry peers).

² Plasma, which accounts for about 55% of the overall content of blood, helps to transport nutrients, hormones and proteins – including clotting factors that help to stop bleeding – to different cells.
³ “CSL Limited Annual Report 2018/19,” published by CSL Limited in June 2019.
⁴ CSL FY19 Results Presentation, slide 13.

Hermes Investment Management

We are an asset manager with a difference. We believe that, while our primary purpose is to help savers and beneficiaries by providing world class active investment management and stewardship services, our role goes further. We believe we have a duty to deliver holistic returns – outcomes for our clients that go far beyond the financial – and consider the impact our decisions have on society, the environment and the wider world.

Our goal is to help people invest better, retire better and create a better society for all.

Our investment solutions include:

High active share equities, private markets, credit and responsible investment advisory services.

For more information, visit www.hermes-investment.com or connect with us on social media:   

For professional investors only. This document does not constitute a solicitation or offer to any person to buy or sell any related securities, financial instruments or products; nor does it constitute an offer to purchase securities to any person in the United States or to any US Person as such term is defined under the US Securities Exchange Act of 1933. It pays no regard to an individual's investment objectives or financial needs of any recipient. No action should be taken or omitted to be taken based on this document. Tax treatment depends on personal circumstances and may change. This document is not advice on legal, taxation or investment matters so investors must rely on their own examination of such matters or seek advice. Before making any investment (new or continuous), please consult a professional and/or investment adviser as to its suitability. All figures, unless otherwise indicated, are sourced from Hermes.

The value of investments and income from them may go down as well as up, and you may not get back the original amount invested. Any investments overseas may be affected by currency exchange rates. Past performance is not a reliable indicator of future results and targets are not guaranteed.

Hermes Investment Funds plc ("HIF") is an open-ended investment company with variable capital and with segregated liability between its sub-funds (each, a "Fund"). HIF is incorporated in Ireland and authorised by the Central Bank of Ireland ("CBI"). HIF appoints Hermes Fund Managers Ireland Limited ("HFM Ireland") as its management company. HFM Ireland is authorised and regulated by the CBI.

Further information on investment products and any associated risks can be found in the relevant Fund's Key Investor Information Document ("KIID"), the prospectus and any supplements, the articles of association and the annual and semi-annual reports. In the case of any inconsistency between the descriptions or terms in this document and the prospectus, the prospectus shall prevail. These documents are available free of charge (i) at the office of the Administrator, Northern Trust International Fund Administration Services (Ireland) Limited, Georges Court, 54- 62 Townsend Street, Dublin 2, Ireland. Tel (+ 353) 1 434 5002 / Fax (+ 353) 1 531 8595; (ii) at <https://www.hermes-investment.com/ie/>; (iii) at the office of its representative in Switzerland (ACOLIN Fund Services AG, Leutschenbachstrasse 50, CH-8050 Zurich www.acolin.ch). The paying agent in Switzerland is NPB Neue Privat Bank AG, Limmatquai 1/am Bellevue, P.O. Box, CH-8024 Zurich.

Issued and approved by Hermes Fund Managers Ireland Limited ("HFM Ireland") which is authorised and regulated by the Central Bank of Ireland. Registered address: The Wilde, 53 Merrion Square, Dublin 2, Ireland. Telephone calls will be recorded for training and monitoring purposes. HFM Ireland appoints Hermes Investment Management Limited ("HIML") to undertake distribution activities in respect of the Fund in certain jurisdictions. HIML is authorised and regulated by the Financial Conduct Authority. Registered address: Sixth Floor, 150 Cheapside, London EC2V 6ET. Telephone calls will be recorded for training and monitoring purposes. Potential investors in the United Kingdom are advised that compensation may not be available under the United Kingdom Financial Services Compensation Scheme.

In Singapore: This document and the information contained herein shall not constitute an offer to sell or the solicitation of any offer to buy which may only be made at the time a qualified offeree receives a Hermes Investment Funds Public Limited Company prospectus, as supplemented with the global supplement, the relevant fund supplement, and the relevant Singapore supplement (the "prospectus"), describing the offering and the related subscription agreement. In the case of any inconsistency between the descriptions or terms in this document and the prospectus, the prospectus shall control. Securities shall not be offered or sold in any jurisdiction in which such offer, solicitation or sale would be unlawful until the requirements of the laws of such jurisdiction have been satisfied. For the avoidance of doubt, this document has not been prepared for delivery to and review by persons to whom any offer of units in a scheme is to be made so as to assist them in making an investment decision. This document and the information contained herein shall not constitute part of any information memorandum. Without prejudice to anything contained herein, neither this document nor any copy of it may be taken or transmitted into any country where the distribution or dissemination is prohibited. This document is being furnished on a confidential basis and solely for information and may not be reproduced, disclosed, or distributed to any other person. This document has not been reviewed by the Monetary Authority of Singapore.

In Spain: The information contained herein refers to a sub-fund (the "Sub-Fund") of Hermes Investment Funds plc (the "Company"), a collective investment scheme duly registered with the Spanish Securities Market Commission ("CNMV") under number 1394, the website www.cnmv.es may be consulted for an updated list of authorised distributors of the Company in Spain (the "Spanish Distributors"). This document only contains brief information on the Sub-Fund and does not disclose all of the risks and other significant aspects relevant to a potential investment in the Sub-Fund. Any investment decision must be based solely on the basis of careful consideration and understanding of all information contained in the Company's latest prospectus, key investor information document ("KIID") and the latest half-yearly and audited yearly reports. The Spanish Distributors must provide to each investor, prior to that investor subscribing for shares of a Sub-Fund, a copy the KIID translated into Spanish, and the latest published financial report. All mandatory official documentation shall be available through the Spanish Distributors, in hard copy or by electronic means, and also available upon request. These documents are also available free of charge at the office of the Administrator, Northern Trust International Fund Administration Services (Ireland) Limited, Georges Court, 54- 62 Townsend Street, Dublin 2, Ireland, tel (+ 353) 1 434 5002 / Fax (+ 353) 1 531 8595, or at <https://www.hermes-investment.com/ie>. It is advisable to obtain further information and request professional advice before making an investment decision. BD004425 11/19 0007571